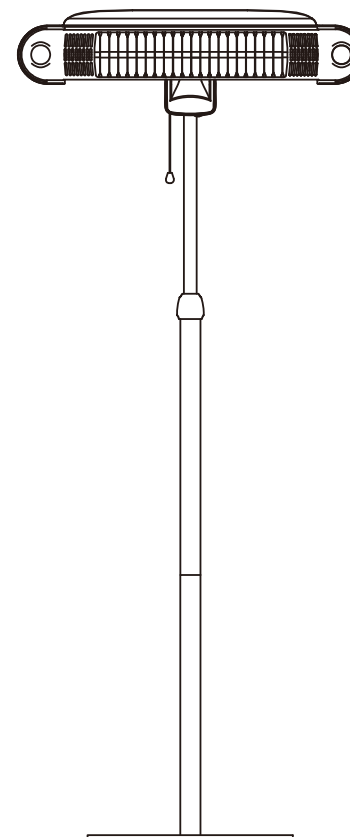

**Freestanding Patio Heater
INSTRUCTION MANUAL**

ITEM # 183643

Model # ZHQ1537



**Distributed by: AZ Patio Heaters
8550 N 91st Ave Ste C25 Peoria, AZ 85345
Warranty Information: 888-775-1330**

IMPORTANT

1 Year Manufacturer's Warranty

This product is inspected, tested and carefully packaged to minimize the chance of damage during shipment. If a part (excluding light bulbs and fuses*) within one year from the date of purchase proves to be defective in material or fabrication under normal use, the part will be repaired or replaced. The Company's obligation under the warranty is to replace or repair defective parts at our discretion. Any expenses or damage resulting from the installation, removal or transportation of the product will be the responsibility of the owner and are not covered by this warranty. The owner assumes all other risks arising out from the use or misuse of the product. The warranty will be void if the product damage or failure is deemed by the Company to be caused by accident, alteration, misuse, abuse, incorrect installation or removal, or connection to an incorrect power source by the owner. The Company neither assumes, nor authorizes any person or entity to assume for it any obligation or liability associated with its products. * Light bulbs and fuses are not covered under this warranty.* We are also not responsible if there is damaged cause by the weather or salt water elements if the customer does not protect it as specified in the owners manual.

STORAGE

When not in use, store this unit in a cool, dry location. To prevent dust and dirt build-up, use the original packaging to repack this unit.

TROUBLE SHOOTING

If this unit does not operate properly, please check the following before repair or service:

- Check if the power cord is plugged into an electrical outlet, if not, plug in.
- Check if electricity to the main fuse is working.
- Make certain the power switches are turned on. If not, choose a setting.
- This heater employ with a thermally protected device. It will operate due to overheating. If it operated, please check if any object getting too close to the heater. To restart the heater, please wait about 5 minutes and then reset the switch or remote control.

WARNING: any other servicing should be performed by an authorized service representative.

IMPORTANT INSTRUCTIONS:

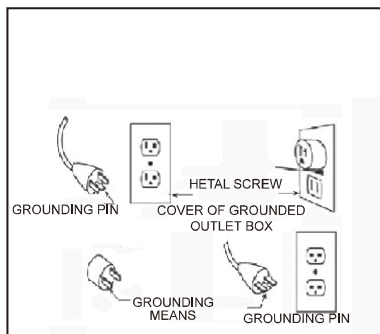
When using this electric unit, basic safety precautions should always be followed to reduce the risk of fire, electric shock and/or injury.

1. Read ALL instructions before using this unit.
2. **WARNING:** Assembling the heater well as described in this instruction before using.
3. **CAUTION:** Risk of Electric Shock. DO NOT open or try to repair the heater yourself.
4. This heater may get hot when in use. To avoid burns, DO NOT let bare skin touch hot surfaces.
5. Keep combustible materials, such as furniture, pillows, bedding, paper, clothes, and curtains at least 3 ft from the front of the heater and keep them away from the sides, top, and rear. DO NOT place towels or other objects on the heater.
6. Extreme caution is necessary when any heater is used by or near children or the disabled. Do not leave the heater unattended while in operation.
7. DO NOT operate any heater with a damaged cord or after the heater malfunctions, has been dropped or has been damaged in any manner, Return heater to authorized service examination, electrical or mechanical adjustment, or repair.
8. This heater is not intended for use in bathrooms, laundry areas and similar indoor locations. Never locate heater where it may fall into a bathtub or other water container. To protect against electrical hazards, DO NOT immerse in water or other liquids.
9. DO NOT touch the control panel or plug in with wet hands.
10. FOR FREESTANDING TYPE ASSEMBLING: DO NOT run cord under carpeting. DO NOT cover cord with throw rugs, runners, or similar coverings. Arrange cord away from traffic area and where it will not be tripped over.
11. DO NOT insert or allow foreign objects to enter any ventilation or exhaust opening as this may cause an electric shock or fire, or damage the heater.
12. To prevent a possible fire, DO NOT block the air intakes or exhaust in any manner, DO NOT use on soft surfaces, like a bed, where openings may become blocked.
13. A heater has hot and arcing or sparking parts inside. DO NOT use in areas where gasoline, paint, or flammable vapors or liquids are used or stored, or other flammable materials are present.
14. **WARNING:** Risk of fire—keep combustible material such as furniture, papers, clothes, and curtains at least 3 feet (0.9) from the front of heater and away from the sides and rear.
15. Always plug heaters directly into a wall outlet/receptacle. Never use with an extension cord or relocatable power tap (outlet/power strip).

16. To avoid fire or shock hazard, plug the unit directly into a 120V electrical outlet,
17. To disconnect heater, turn controls OFF, then remove plug from outlet. Pull firmly on plug, DO NOT unplug by pulling on the cord.
18. Always unplug the unit before moving or whenever the heater is not in use.
Use only for intended household use as described in this manual. Any other use not recommended by the manufacturer may cause fire, electric shock, or injury to persons. The use of attachments not recommended or sold by unauthorized dealers may cause hazards.
19. DO NOT attempt to repair or adjust any electrical or mechanical functions on this unit, doing so will void your warranty, the inside of the unit contains no user serviceable parts. Only qualified personnel should perform all servicing only.
20. Connect to properly grounded outlets only.
21. Children should be supervised to ensure that they do not play with the appliance.

FOR WALL MOUNTED TYPE ASSEMBLING:

22. CAUTION: Mount with bottom of heater at least 2.4 m above floor or grade.
23. 250mm from the side wall, 500mm from the ceiling, Installation height above 2.4 m.



WARNING:

This heater has a voltage rating of 120 volts. The cord has a plug as shown in A. An adapter as shown in C is available for connecting three-blade grounding-type plugs to two-slot receptacles. The grounding plug extending from the adapter must be connected to a permanent ground such as a properly grounded outlet box. The adapter should not be used if a three-slot grounded receptacle is available.

DO NOT DEFEAT THE SAFETY PURPOSE OF THE GROUNDED PLUG.

SAVE THESE INSTRUCTIONS

SPECIFICATIONS

Item	Standing Type	Wall Mounted Type
Voltage Rating	120V (60Hz)	120V (60Hz)
Power Consumption	1500W	1500W
Unit Size	29.92in x 24.41in x 81.50-89.17in	29.92in x 10.16in x 15.55in
Unit Weight	32.63 lbs	7.41 lbs

The heater must be fixed to a wall with the bracket supplied to allow adequate ventilation.

Never fix or place heater near flammable or combustible materials.

Generally heaters must be placed at a safe distance (clear space) of at least 2.0m from combustible materials and glass walls. If installed in workshops or garages where inflammable or combustible paints are used, the heaters must be installed at a distance of at least 4.0m from the source of danger.

If the heaters are placed in areas where spray painting of any description is taking place, they should not be used during the painting operations.

Never use the heater in particularly dusty and explosive areas.

Operation

Connect the power cable to a 120V, 12.5 amp supply that is located in a safe, dry area.

- The Pull-Off Switch is used to control the power of the appliance.
 - (I) Once the power is on, the PCB Hand Switch on the heater is used to control the heat and light setting.

Press one times: For Heating Element;

Press two times: For LED lights;

Press three times: For LED lights and heating element;

Press four times: Turn off LED lights and heating element.
 - (II) The Remote control is also used to control the heat and light settings.

The left button: For LED lights;

The right button: For Heating element.
- Although the patio heater is shower proof, do not use when raining or in wet conditions.

Always disconnect the power cable from the electrical supply, when the patio heater is not in use.

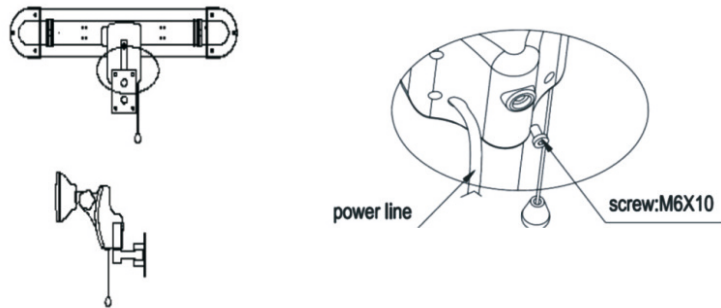
MAINTENANCE

Unplug the unit and let it cool completely.

- To keep this unit clean, the outer shell may be cleaned with a soft, damp cloth. You may use a mild detergent if necessary. After cleaning, dry the unit with a soft cloth.
- DO NOT use alcohol, gasoline, abrasive powders, furniture polish, or rough brushes to clean the heater. This may cause damage or deterioration to the surface of the heater.
- Although this heater is outdoor approved, DO NOT immerse the heater in water for your safety.

Wait until the unit is completely dry before use.

- 2) Fix the heater on the pole by using the provided one piece of M6*10mm Screw and fix tightly.



WARNING: the screws must be fixed tightly.

WARNING: Risk of Fire – keep combustible material such as furniture, papers, clothes, and curtains at least 3 feet (0.9 m) from the front of the heater and away from the sides and rear.

The unit should be used after assembly well.

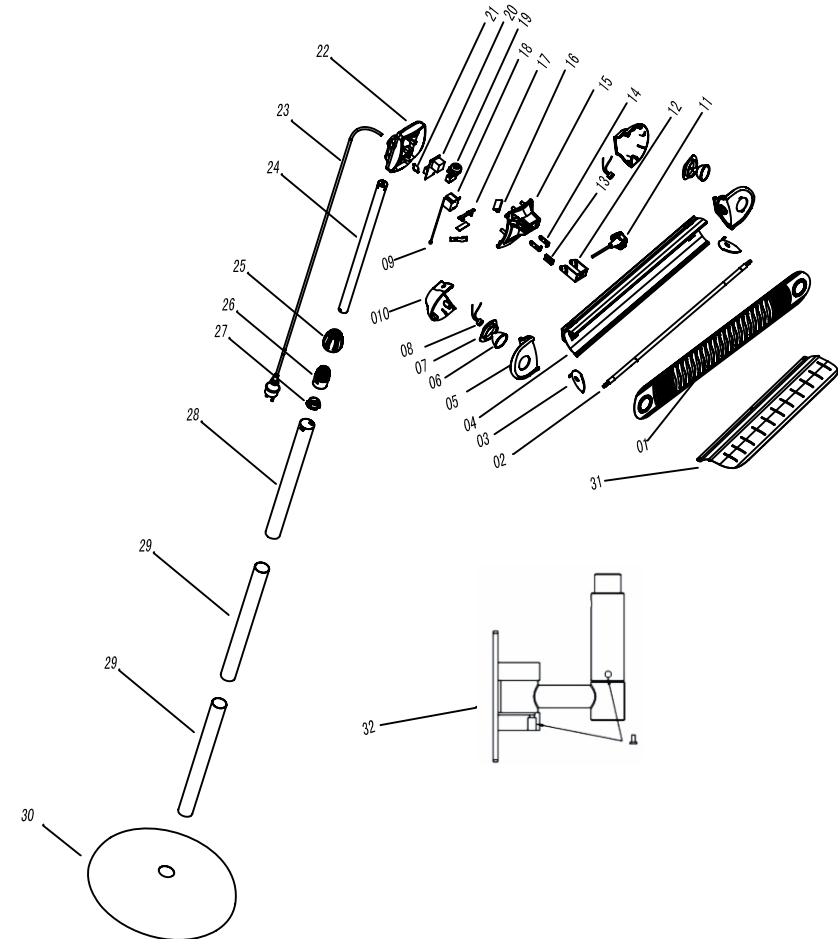
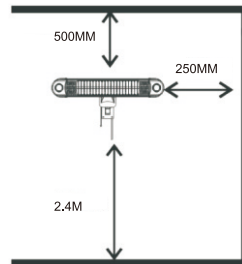
Only use the halogen heater on a firm solid vertical wall where the Mounting Bar is in contact with the wall.

Wiring procedures and connections shall be in accordance with the national and local codes having jurisdiction.

To reduce the risk of fire, do not store or use gasoline or other flammable vapors and liquids in the vicinity of the heater.

Installation to Wall

- When fixing the heater to a wall, ensure hinges are in the underside so that the lid hands down in the open position.
- Minimum required distances:
250mm from the side wall
500 mm from the ceiling
Installation height above 2.4M



NO	PART NAME	QTY
1	MESH	1
2	HEATING ELEMENT	1
3	SHADING PLATE	2
4	REFLECTOR	1
5	SIDE FRONT COVER	2
6	LED LIGHT	2
7	LED LIGHT HOLDER	2
8	LED LIGHT SOCKET	2
9	PENDANT	1
10	SIDE BACK COVER	2
11	KNOB	1
12	U PLATE	1
13	SCREW PLATE	1
14	CHAFE PLATE	2
15	PCB BOX	1
16	WATERPROOF PART	1

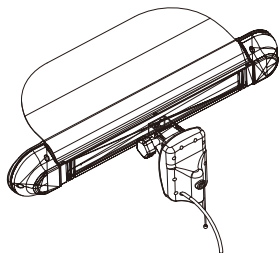
NO	PART NAME	QTY
17	PCB HOLDER PLATE	1
18	SWITCH	1
19	OVERTURN SWITCH	1
20	PCB	1
21	TEMPERATURE CONTROLLER	1
22	PCB COVER	1
23	POWER CORD	1
24	TOP S.S POLE	1
25	NUT CAP	1
26	SCREW	1
27	BLOCK PLATE	1
28	MIDDLE S.S POLE	1
29	BOTTOM S.S POLE	2
30	S.S BASE	1
31	PROTECTION COVER	1
32	WALL MOUNTED BRACKET	1

Feature

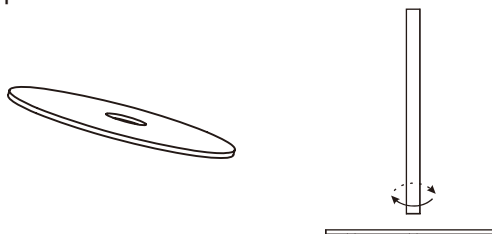
- Stainless steel construction
- Adjustable height 6' to 6.5' with tilting head
- Safety tilt switch and overheat protection
- Halogen heating element with 2 side LED lights
- Optional wall mounting bracket included
- Remote control included
- Warms an area of approximately 100 square feet
- Easy assembly

Assembling 1 - standing type

Step 1: Fix the top cover with the heater by M3*6 screws.



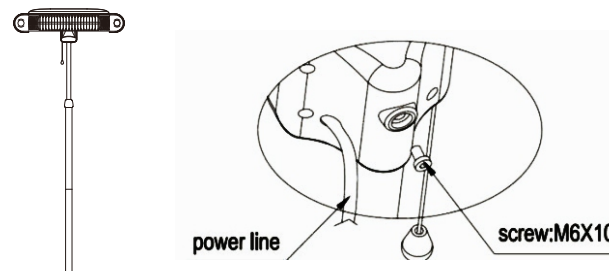
Step 1: Fix the Bottom Tube to the base.



Step 3: Connect the Adjustable tube with Bottom two tubes by screwing them together.

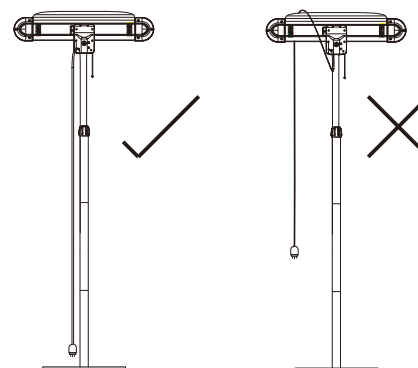


Step 4: Fix the heater on the pole by using the provided one piece of M6*10mm Screw and fix tightly.



Complete!

Warning: The power cord can not be hung on the heater head.



Assembling 2 - wall mounted type

1) If the heater is intended for wall mounting use, please fix the wall bracket using the 2PCS screws M3*6mm.

